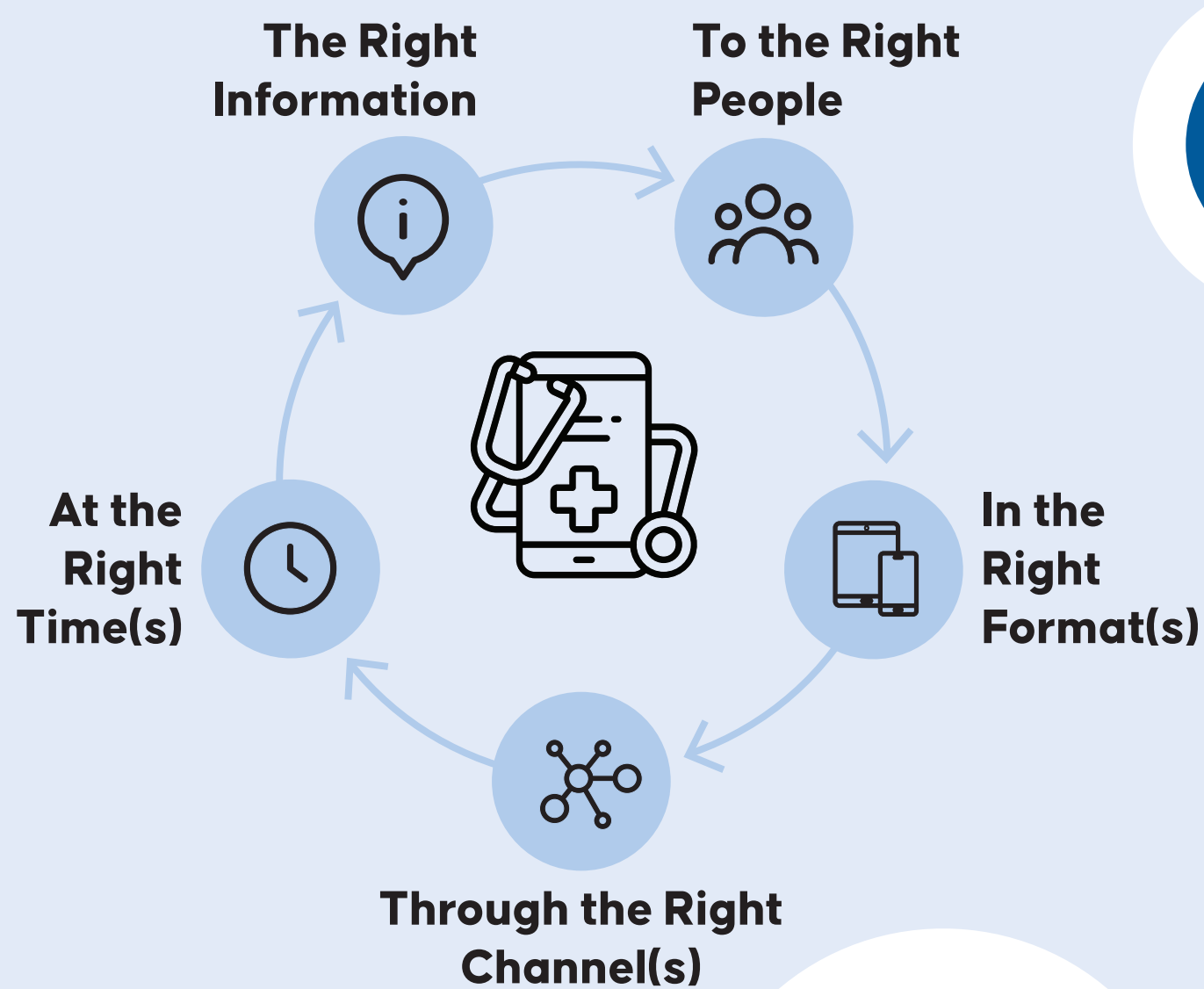


## Clinical Decision Support (CDS)

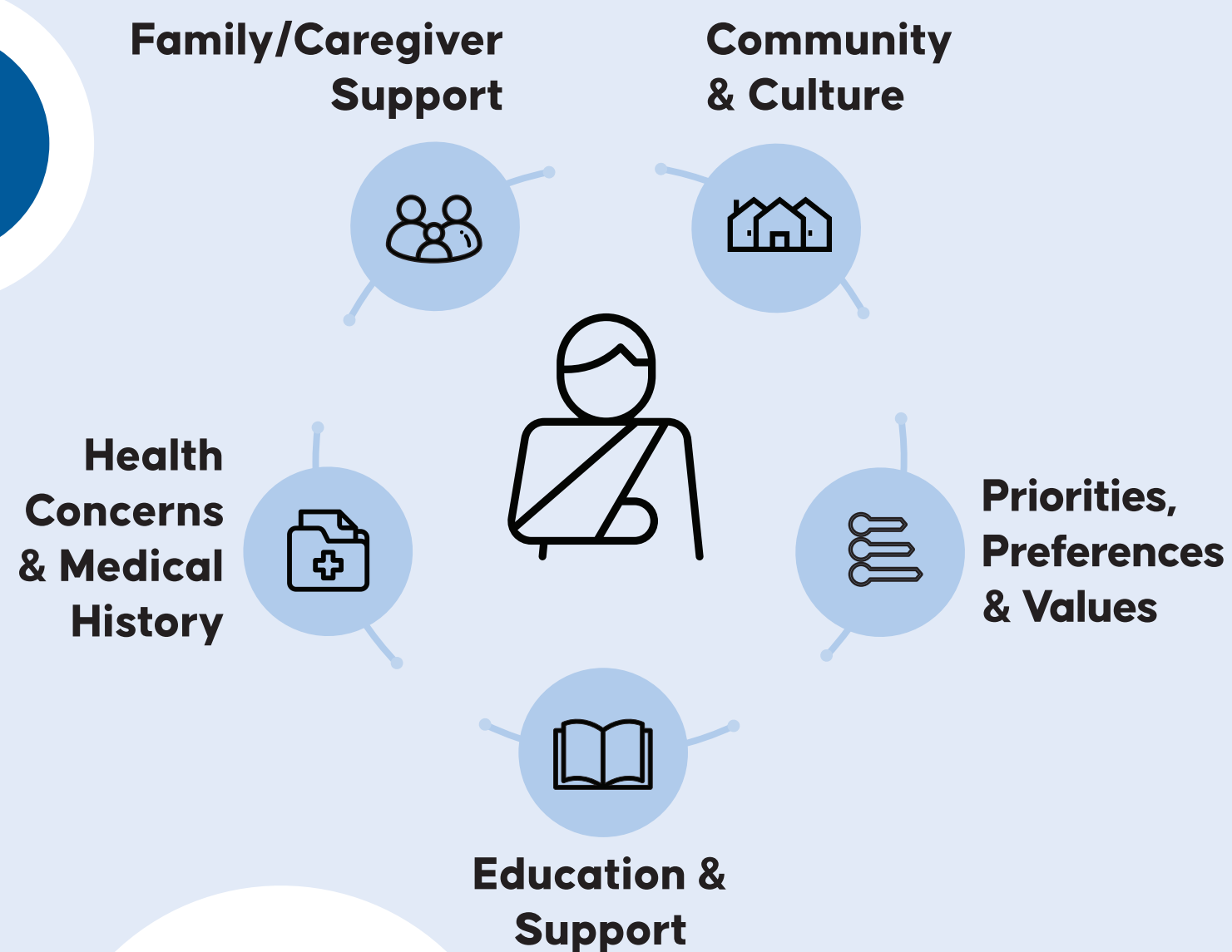
and CDS Five Rights<sup>1</sup>

Digital tools that inform and guide patient care decisions across platforms including EHRs, patient portals, and mobile apps.



## Patient-Centered Care

Care that considers a person's needs across multiple factors to support their health and well-being.



## Patient-Centered Clinical Decision Support (PC CDS)

Tools that significantly incorporate patient-centered factors related to knowledge, data, delivery, and use.<sup>2</sup>



### Knowledge

Using evidence-based findings from comparative effectiveness research and patient-centered outcomes research



### Patient Data

Incorporating health data affecting individual patient health:

- patient-generated health data
- patient-reported outcomes and preferences
- patient-specific information
- social determinants of health



### Delivery

Directly engaging patients or caregivers across different settings through:

- apps
- patient portals



### Use

Facilitating patient-clinician information exchange that ensures mutually acceptable decisions by exploring and comparing:

- benefits
- harms
- risks

<sup>1</sup> Osheroff, Teich, Levick et al., 2012. Improving outcomes with CDS: an implementer's guide, Second Edition.

<sup>2</sup> Dullabh P, Sandberg SF, Heaney-Huls K, Hovey LS, Lobach DF, Boxwala A, Desai PJ, Berliner E, Dymek C, Harrison MI, Swiger J. Challenges and opportunities for advancing patient-centered clinical decision support: findings from a horizon scan. Journal of the American Medical Informatics Association. 2022 Jul 1;29(7):1233-43.